



## Ladies Drive at Briglen

There were 'cheers' all around when Bron and Roy pulled up with his Suzuki Buggy. Wil's eyes were as big as saucers when he saw it! We knew we were in for a great weekend already with Q and Deb, Peter and Jo, Sandra and Wayne & Keryn, Brent and Wil with the quad & Clarentyne on board and good weather.

We started the day with a coffee and wheel change even before we left Tarlee. As we moved on with Hill Billy music, 'On the Road again' and 'I Like Beer, It makes me feel Mellow' we passed Porter Lagoon and Burra, then stopped at Mt Bryan for morning tea. We checked out the pub for future accommodation, coffee and a look at their collection of art work. Here a small kitten tried very hard to hitch a ride to a new home with whoever was happy to adopt it!

Soon we were on the road again, turning off just past White Yarcowie onto Wanna road. It was dust free and quite green for this area, past Hiles Lagoon, onto Mallet road, then Bri-Glen/Springs road and soon at our destination Bri-Glen.

We met with Brian for the latest update then, after setting up, Roy and Brent tried out the Suzuki while the ladies took to the track under the gentlemen's guidance to check out Spring Road Creek, Meteorite rocks and the Gold Field then back to camp for 'happy hour' around the camp fire.



We had chosen a different area to camp at this time and decided it was quite comfortable, sheltered, with lots of sites for more campers. Maybe with the addition of a toilet nearby, we could make it even better for future trips. The previous spot has become quite over grown.

With the camp fire going and providing the warmth and atmosphere required for a pleasant evening together, we started with the usual happy hour. Much later, a shared apple pie and delicious scones with jam and cream made by Deb and Q were much enjoyed. A couple of guys came for a visit from another camp.

Next morning, we woke to the sound of an emu booming near our camp. Wil and Nanny Plum went exploring along the nearby creek. Rock formations and animal tracks were interesting as were the old vehicles and collection of vintage machinery around home base. Wil and Nanny tried out the old scoota, buggy and treadmill!

Back at camp, a cow and pig visited the morning camp fire, causing a bit of an uproar! You never know what wild life to expect when out bush!





## **Ladies Drive at Briglen**

After breakfast, Q travelled with Roy and Clarentyne in the 'Mosquito' Suzuki and Wil went on the quad with Poppy. They saw lots of kangaroos, a few emus and had lots of fun travelling many tracks through the bush while the rest of the group worked their way to the Tobbitts Lookout and Reg Sprigs peak, travelling in the opposite direction to what we have normally done in the past. Ladies still at the wheel, we then conquered the boundary fence track, which consisted of four major creek washouts. With the help of Wayne, Roy, Q & Peter and some really helpful advice and guidance, 'WE DID IT'!!!!!! My tow bar needed removing and a few dead branches were removed from the track. My only wound to show for the challenge was a right angled mud flap!!!! Thanks for your support team!



We found our way to the very familiar Debs creek where we had stopped on many occasions for morning tea on previous trips. We didn't see a lot of wildlife on our travels but saw a couple of eagles, a few roos, a couple of goats, and emu. From here we travelled on at least one new track leading us back to home base. By now it was a late lunch and pack up time. Unfortunately the Mt Bryan pub wasn't open for business so we enjoyed a coffee and cake at a cafe in Burra. Soon it was time to part ways again until the next club trip.

Thank you for a fantastic weekend Q and Deb and all who came along to make it enjoyable.

**[Keryn]**





**Ladies Drive at Briglen**



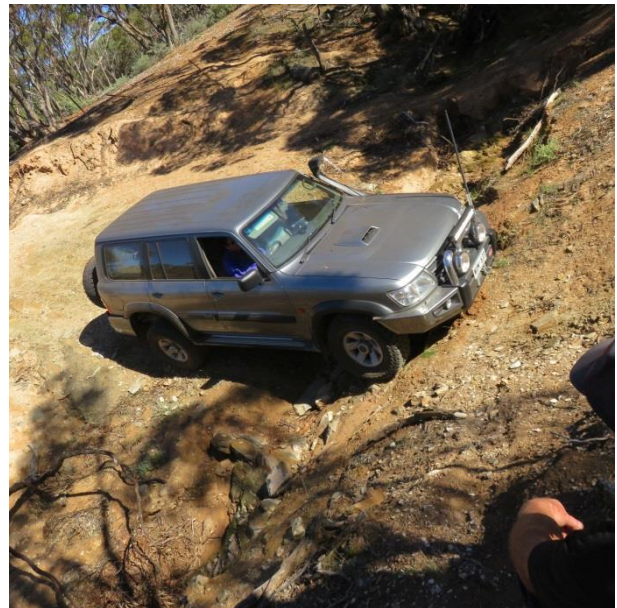
Wildlife??



Bogged??



Professional Guidance



Worked a Treat!